



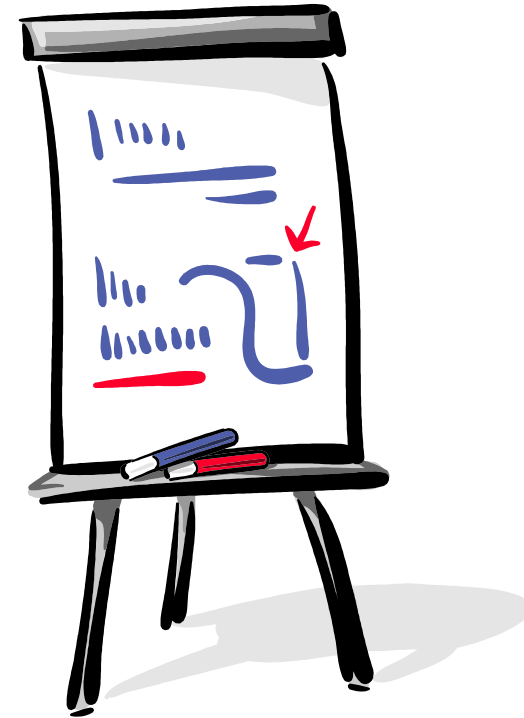
Java Desktop System - Mehr als nur ein Desktop

Daniel Jäsche



Agenda

- Überblick Sun Java Desktop System
- Die Produkte des Sun JDS
- Administrator-Tools



What We Hear: Top Issues

- My users only know how to use Windows, Linux is too difficult**
- It's got to work with my existing infrastructure**
- All of my files today are in Microsoft file formats**
- Still need access to legacy applications**
- How do I manage desktops?**
- I can't afford to make a change**

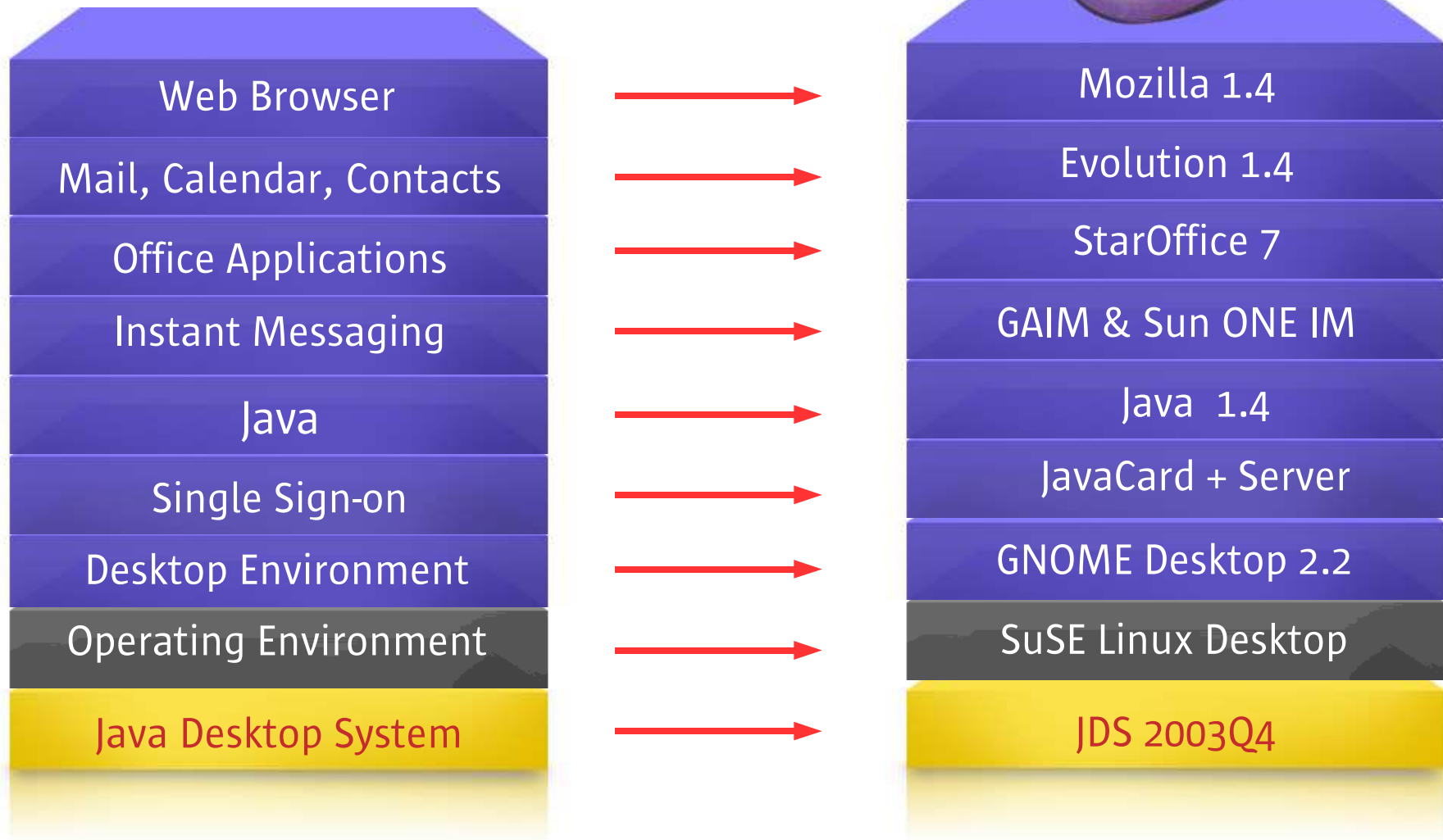


What's In Here: Key Benefits

- Simple to use, familiar look and feel**
- More Secure**
- Comprehensive application base**
- More Affordable**
- Technology Innovation**
- Open Source and Open Standards**

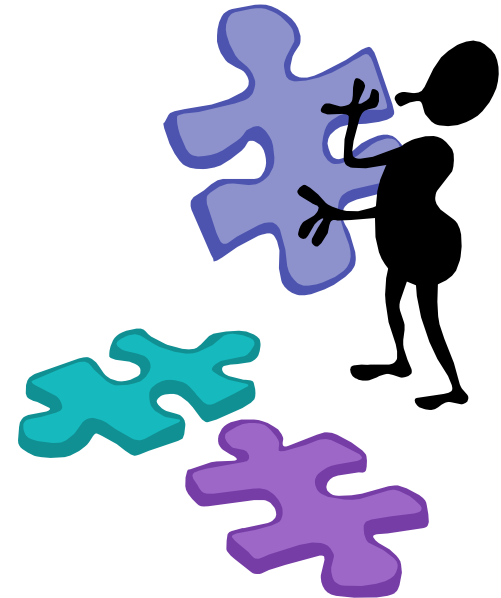


JDS Überblick



System Administrator Tools

- Remote Desktop Takeover
- Online Updater
- Java Desktop System Configuration Manager
- Sun Control Station



JDS Remote Desktop Takeover



JDS Configuration Manager

Enterprise Ready

- **APOC: Advanced POLICY Based Configuration**
 - Sun JDS Configuration Manager
 - Konfigurationen auf LDAP-Server
 - Zentrale Verwaltung, Gruppierung
 - User, Node (Gruppe) oder Host-Basiert
- Konfiguration
 - **User:** Ändern für einen bestimmten Benutzer
 - **Node:** Für Mitglieder einer Gruppe (Node)
 - **Host:** Ändern der Konfiguration einer Maschine im Netzwerk

Hierarchisches Benutzer Konzept

Get Enterprise Ready

- APOC kann die Benutzerstrukturen von bestehenden LDAP Servern verwenden
 - Benutzerstrukturen können anhand von Rollen angelegt werden
- Bilden baumartiger Benutzerstrukturen
 - Benutzer einer Abteilung oder Funktion werden in einem Zweig gruppiert
- Änderungen an diesem Zweig (oder Rolle) wirken sich auf die Mitglieder aus

APOC Overview

Get Enterprise Ready

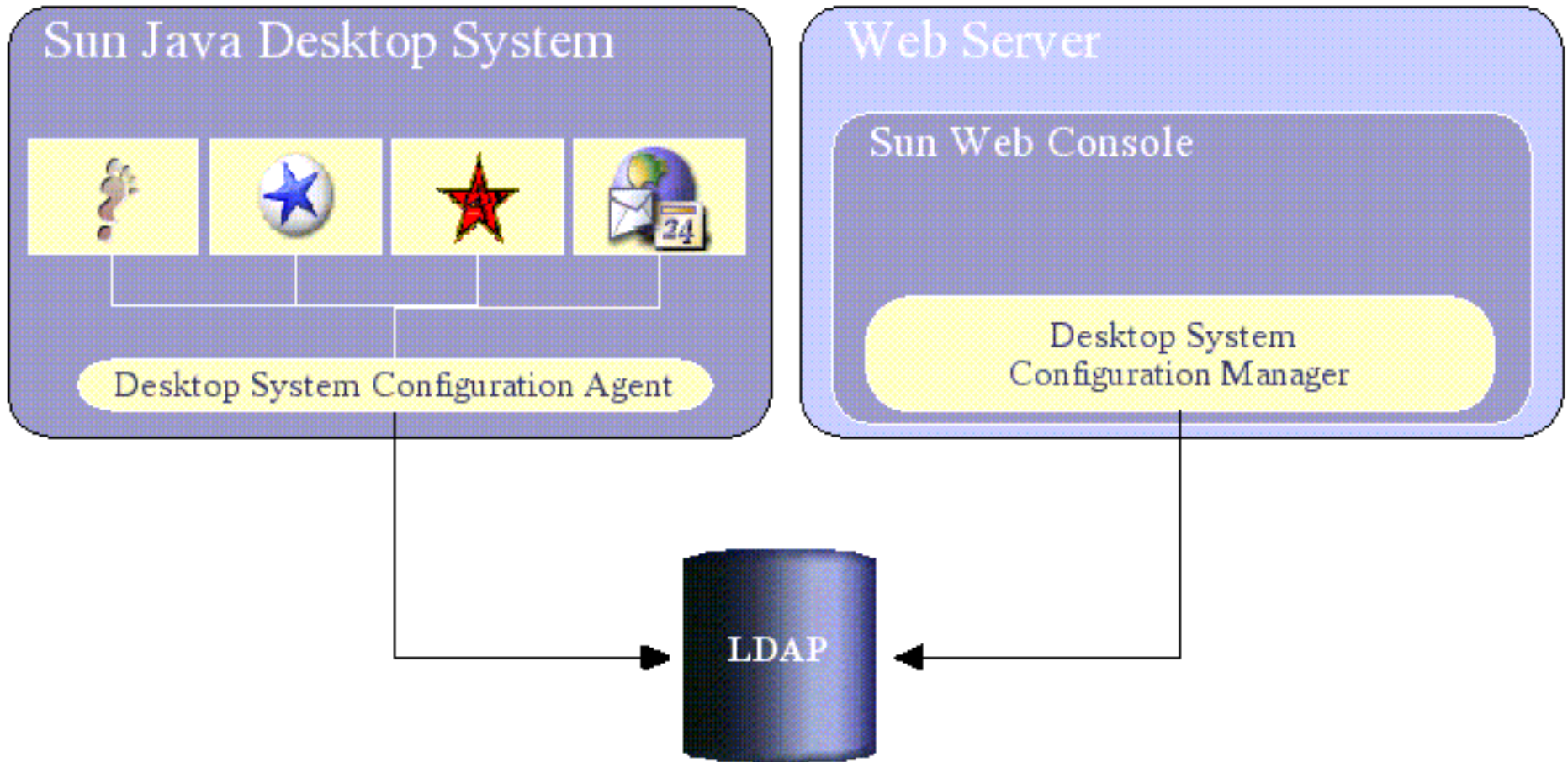


Figure 1: Architecture Overview

JDS Configuration Manager

APOC Manager - Web Browser

Console | Version | Policy Packages | Log Out | Help

APOC Manager
User: jmonroe Server: linux



Users | **Hosts** | **Policies** | **Policy Groups**

Organization Tree | Policy Repository
ApocDemo > Staff

Search

Staff (3 Items)
Filter: All Items

Name	Type	Actions
Customer Care Centre (CCC)	Organization	View
Marketing	Organization	View
Monroe, Jason (jmonroe)	User	View

Policies > Mozilla 1.4 > Appearance > General

General - Marketing Save Reset

The Appearance General preferences panel allows you set components that you want to use when you start up Mozilla

Startup Options | Toolbar View

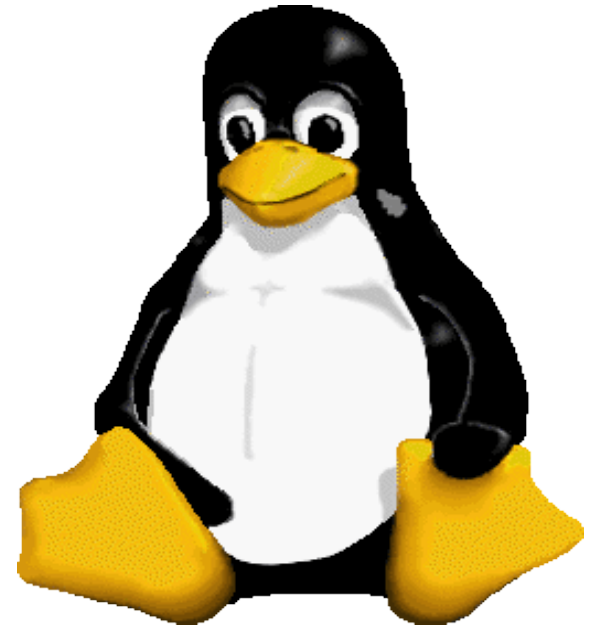
Report...

Startup Options (3 Items)
Policy Actions

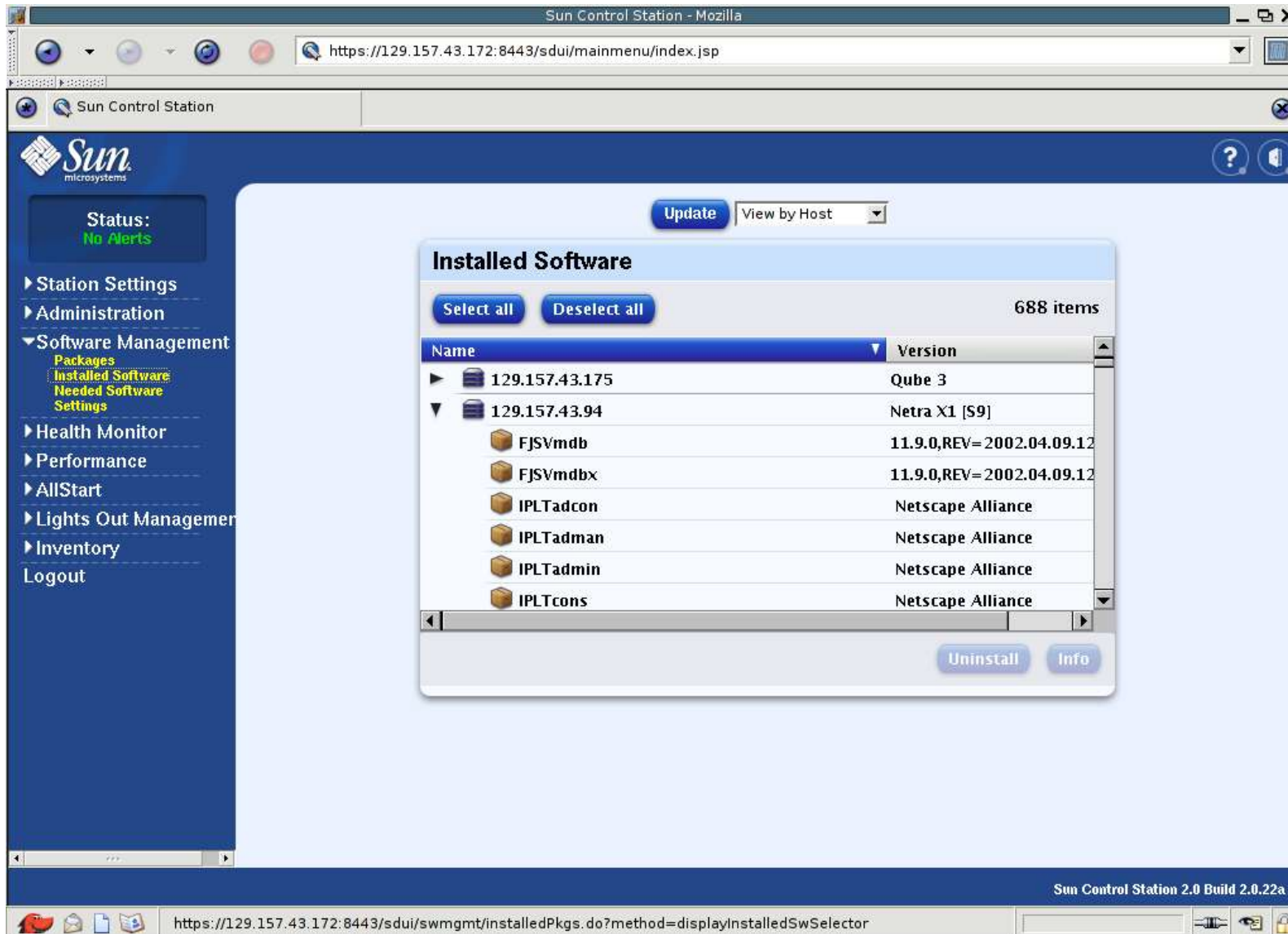
<input checked="" type="checkbox"/>	Status	Name	Value
<input type="checkbox"/>		Open Navigator	<input checked="" type="checkbox"/> Enable
<input type="checkbox"/>		Open Composer	<input type="checkbox"/> Enable
<input type="checkbox"/>		Open Mail and Newsgroups	<input type="checkbox"/> Enable

Sun Control Station

- **Remote Installation durch**
 - **AutoYaST Unterstützung**
 - **PXE Booting**
- **Software – Management**
 - **Patch Distribution**
 - **3rd Party Komponenten**
- **Health-Performance Monitoring**
- **Grid Unterstützung**



Sun Control Station 2.0



The screenshot shows the Sun Control Station 2.0 web interface in a Mozilla browser window. The address bar shows the URL: `https://129.157.43.172:8443/sdui/mainmenu/index.jsp`. The interface features a navigation menu on the left with options like Station Settings, Administration, Software Management, Health Monitor, Performance, AllStart, Lights Out Management, Inventory, and Logout. The main content area displays the 'Installed Software' for a specific host, with a table listing software packages and their versions. The status is 'No Alerts'.

Status:
No Alerts

Navigation Menu:

- Station Settings
- Administration
- Software Management
 - Packages
 - Installed Software
 - Needed Software
 - Settings
- Health Monitor
- Performance
- AllStart
- Lights Out Management
- Inventory
- Logout

Installed Software Summary:

- Update
- View by Host
- Select all
- Deselect all
- 688 items

Name	Version
▶ 129.157.43.175	Qube 3
▼ 129.157.43.94	Netra X1 [S9]
FJSVmdb	11.9.0,REV=2002.04.09.12
FJSVmdbx	11.9.0,REV=2002.04.09.12
IPLTadcon	Netscape Alliance
IPLTadman	Netscape Alliance
IPLTadmin	Netscape Alliance
IPLTcons	Netscape Alliance

Buttons: Uninstall, Info

Footer: Sun Control Station 2.0 Build 2.0.22a

Address Bar: `https://129.157.43.172:8443/sdui/swmgmt/installedPkgs.do?method=displayInstalledSwSelector`

Diese Präsentation wurde erstellt mit:



Fragen?

Vielen Dank für Ihre Aufmerksamkeit!

Daniel Jäsche

daniel.jaesche@sun.com

